

FRONT



BRACKET, lower shock mount front, each
E6027 53-62.....\$14.95



BUSHING SET, A-arm, upper & lower
E3074 63-82.....\$32.95



LINK KIT, front sway bar, w/bolts, nuts, spacers, retainers & rubber bushings
E3293 63-82.....\$9.95

E3066



E3065



RIVET SET, ball joint, 6pc
E3066 63-82 lower\$5.95
E3065 63-82 upper.....\$5.95

E3080 L&R



E3081 L&R



SHIELD, brake backing, each
E3080L 65-75 silver, left\$24.95
E3080R 65-75 silver, right\$24.95
E3081L 76-82 gold, left\$24.95
E3081R 76-82 gold, right\$24.95



STUD SET, wheel, front & rear, 5pc
E3060 65-82.....\$9.76

REAR



E6187R

TRAILING ARM, rear suspension, each
E6186L 63-64 left\$199.95
E6186R 63-64 right\$199.95
E6187L 65-82 left\$169.00
E6187R 65-82 right\$169.00

TRAILING ARM, suspension, rear, eliminates water build-up in the arms, offset arm offers 2" additional tire clearance for larger wheels, pair
E3780 63-82 offset\$369.00



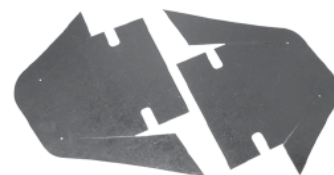
E3783L

TRAILING ARM, rear suspension, w/rotor, complete, each
E3783L 65-82 left\$795.00
E3783R 65-82 right\$795.00

BUSHING, rear trailing arm, each
E3076 63-82.....\$7.95



E3287



E3288

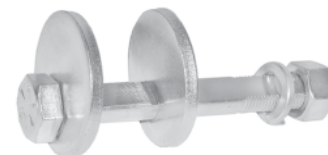
DUST COVER, A-arm, pair
E3287 63-66 w/ss staples.....\$12.00
E3289 67 w/ss staples.....\$12.00
E3288 E68 w/staples.....\$12.00
E3290 68L-82 w/fasteners.....\$12.00
E1965 65-67 stainless steel, BB...\$44.95

E7726 other side view

E7726



COVER, rear differential, each
E7729 63-79 stock, 7/16" dia. bolt.....\$89.95
E7730 63-79 stock, 9/16" dia. bolt.....\$89.95
E7726 63-79 HD, 7/16" dia. bolt.....\$144.95
E7727 63-79 HD, 9/16" dia. bolt.....\$144.95



CAM ASSEMBLY, w/cam, lock washer & nut, 4pc
E3237 63-82.....\$8.95

Suspension



E3079L

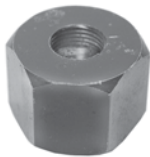
MOUNT, rear lower shock absorber, w/nut, each
 E3079L 63-82 left\$49.95
 E3079R 63-82 right\$49.95



NUT, rear lower shock bolt, 5/8"-18, each
 E3069 63-82 \$2.49

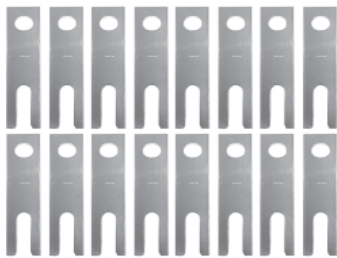


NUT, rear lower shock mount, each
 E3068 63-82 \$2.49



SHOCK MOUNT REMOVER, rear shock mounts, helps prevent damage to end threads, each
 EC583 63-82\$19.95

E3078

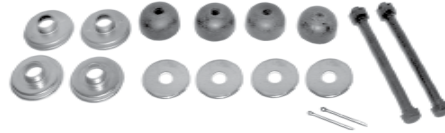


SHIM SET, (4) 1/8", (4) 1/4", (8) 1/32", 16pc
 E3078 63-82 stainless steel\$36.95
 E3077 63-82 steel\$29.95



COTTER PIN, used in rear suspension shims on trailing arms, 3/16" OD x 4 1/2" L, each
 E6115 \$5.75

E3294



MOUNT KIT, rear spring, 18pc
 E3294 63-80\$39.95
 E3235 63-82 2" longer than stock bolts...\$41.00



NUT, spindle, 3/4"-20, each
 E3067 63-82 \$3.50



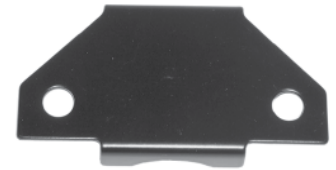
PLATE, rear, sway bar link, each
 E3073 65-82 \$4.95



BRACKET, rear sway bar on frame, each
 E6196 65-67\$12.00



BUSHING SET, rear sway bar link, 4pc
 E3072 65-82\$19.95



RETAINER, stabilizer bushing, rear sway bar, each
 E6197 65-67\$12.00

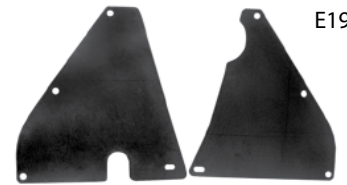


ROD, rear strut, w/bushings, each
 E6912 63-74\$45.00
 E6913 65-79\$45.00

ROD & BUSHING, rear strut, each
 E6142 80-82\$52.00



EC701



E1965

SHIELD, splash, inner, attaches to the frame to protect the underbody, pair
 EC701 64-67 steel, SB\$34.95
 EC702 65-67 steel, BB\$34.95